

Table of Contents

Our Mission Statement	1
Pastor's Report	2
Those Called to Special Service.....	3
 Ministry Team Reports	
Worship Committee.....	4
Education Ministries.....	5
Youth Ministry	6
Caring and Sharing Team.....	7
Stewards Team	9
Women of the ELCA.....	11
Men in Mission.....	12
Older Kids Senior Ministry	13
Campus Ministry	14
Micah's Backpack and Mobile Backpack.....	16
Micah's Garden	17
Micah's Soup for Seniors	18
Micah's Closet.....	18
Property Committee.....	20
Memorial Committee	21
 Financial Reports	
2015 Investments in Ministry through the Core Ministry Fund	22
2015 Investments in Ministry through Micah's Caring Initiative.....	23
2016 Investments in Ministry Plan.....	24
Notes on the 2016 Investments in Ministry Plan	28
 Appendix	
Church Directory	29

Our Mission Statement

As a community of believers guided by the Holy Spirit, the mission of St. Michael Lutheran Church is to:

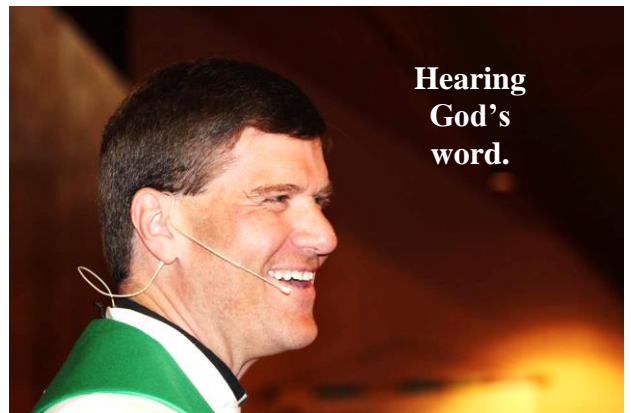
C

Care for God's people in need,



H

Hear of God's love through Word and Sacrament,



R

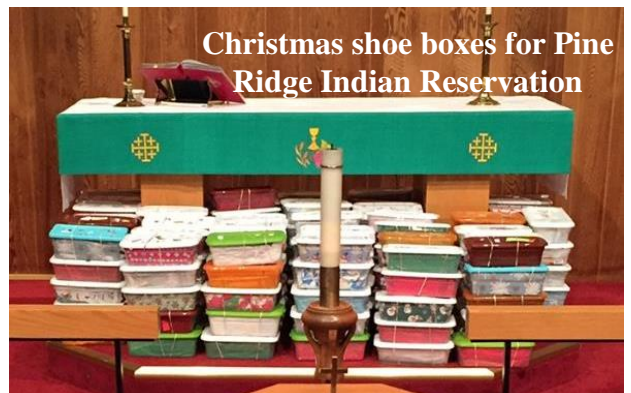
Respond to God's grace with thankful hearts,

I

Invite others into Christ's community,

S

Serve God in our daily lives, and



T

Tell the story of God's love for all.



St. Michael Lutheran Church
2308 Merrimac Road
Blacksburg, VA 24060
(540) 951-8951
hope@stmlc.us
Rev. John Wertz, Jr., Pastor

February 15, 2016

Friends in Christ,

With your help, St. Michael provides a powerful witness to God's love in our community and in the world. Because of your generous gifts, the ministry of St. Michael touches the lives of those in need, nurtures the faith of youth and adults and offers an opportunity for God's people to gather for meaningful worship. Thank you for being God's heart and hands and voices in our community and for being open to the many and various ways that God calls you to serve.

In 2015, the people of God at St. Michael

- worked with 200 partners and over 600 volunteers to provide over meals to 280 hungry students in our community through Micah's Backpack.
- provided bags of food to 90 senior adults per month through Micah's Soup for Seniors.
- shared over 1800 pounds of fruits and vegetables to three food pantries through Micah's Garden.
- served an average of 150 students per week through Micah's Mobile Backpack in the summer.
- provided new clothing through Micah's Closet to students at Price's Fork Elementary School and Head Start at Blacksburg Presbyterian Church.
- served a delicious Thanksgiving Day meal to approximately 190 people.
- provided over \$8,000 in emergency assistance to families needing help with rent, power bills and other emergency needs.
- celebrated the hope of Easter and the joy of Christmas with families, friends and neighbors.
- offered Sunday School, Vacation Bible School, a Women's Bible Study, Tuesday morning and Sunday evening Bible studies to 100 youth and adults.
- gathered for worship each Sunday at 9 AM, 11 AM and 6:30 PM, enjoyed Holden Evening Prayer midweek services for Advent and Lent, and the monthly Across the Spectrum worship.
- supported individuals and families through the Mother's Morning Out program, the Parenting Christian Kids newsletter and Devotionals.
- took youth to Confirmation Camp, the Junior High Servant Event and Synod Youth Events.
- increased our online faith formation presence through regular posts and through the second annual Online Advent Calendar that was viewed by over 12,000 people.
- initiated a group to help provide more shepherding to senior adults.
- completed our partnership with the Montgomery County Public Schools to provide Fun with Friends for families of children with special needs and joined in a partnership with Rainbow Riders and Total Action for Progress to provide Early Childhood Head Start for families working to get out of poverty.

In 2016, we plan to complete the installation of a new roof on the sanctuary, to strengthen the connections between families and youth at St. Michael and to reach out with God's love to new people in our community. I look forward to working with each of you to grow the ministry of St. Michael and proclaim God's love to the world.

Peace and hope,
Pastor John

Those Called to Special Service

Congregational Council

Term Ending 2016

Jim Clemens
Keith Gay
Matthew James

Term Ending 2017

Sheila McCartan
Ben Simmers
Gary Worley

Term Ending 2018

Hank Schneider
Doug Smiley
Tammy Veit

Officers of the Congregational Council and Congregational Leaders

President.....	Jim Clemens
Vice President and Secretary	Keith Gay
Financial Officer	John Krallman
Financial Secretaries	Jim Clemens and Ben Simmers
Ministry Funds Treasurer	John Krallman
Ministry Funds Recording Secretary	Doug Smiley
Memorial Fund Secretary/Treasurer	Cindy Dowdy
Sunday School Secretaries	Jim Clemens and Doug Smiley
Trustees	Jeff Birch, Jim Clemens, Fran Shepherd, Ben Simmers, Doug Smiley, and Dave Surface

Ministry Team Leaders and Ministry Staff

Accompanist (6:30 PM service).....	Reed Yearwood
Accompanist (9:00 AM and 11:00 AM services)	Timmy Akinola
Administrative Assistant	Suzanne Gay
Caring and Sharing.....	Vacant
Choir Director	Patrice Yearwood
Finance	John Krallman
Lay Associate in Ministry	Sandy Birch
Memorial	Jim Clemens
Men in Mission	Jeff Birch
Micah's Backpack Director	Jennie Hodge
Micah's Closet Director.....	Sheila McCartan
Micah's Soup for Seniors Director	Dianne Krallman
Property	Vacant
Stewards	Hank Schneider
Webmaster.....	Philip Isenhour
Women of the ELCA	Alice Schneider
Worship.....	Pastor John Wertz
Youth Ministry	Sheila McCartan, Jodi Smiley, and Alec Alderman

Gathered in Worship

At the heart of St. Michael's life together is worship. We gather each Sunday at 9:00 AM, 11:00 AM and 6:30 PM and then provide for seasonal worship opportunities and celebrations. This year, we began a new service called "Across the Spectrum" in partnership with Christ Lutheran Church in Radford. The service which meets at St. Michael on the first Sunday of the month and at Christ on the 3rd Sunday of the month provides an opportunity for people of all abilities to join in praising God.

Our life together is supported by the Sunday Servants who:

- **Provide altar care:** Volunteers from the congregation prepared Holy Communion and changed altar area vestments. Their duties included, but were not limited to, preparing and cleaning of communion ware after the 11:00 AM service. Pastor John oversees altar care for the 9:00 AM and 6:30 PM services.
- **Assist with communion, serve as lay readers, greeters, and ushers and acolytes:** Volunteers from the congregation served in these capacities. Sandy Birch and Suzanne Gay coordinate volunteers and provide materials for these activities.
- **Donate flowers:**
 - Weekly flower arrangements were donated by members of the congregation. Opportunities to reserve/donate for a particular week were communicated via a reservation sheet in the hallway.
 - During the holidays, we enjoyed lilies and poinsettias for Easter and Christmas Eve services respectively.

Our life together is strengthened by our Music Ministry: In 2015, St. Michael's music ministry continued to provide wonderful leadership for worship and meaningful special music.

- The 9 AM Hymn Choir includes more individuals who worship at 9 AM in music ministry.
- We give thanks for our talented organist, Timmy Akinola, for our gifted music director, Patrice Yearwood, our choir and solo musicians who provide beautiful music for the 9 AM and 11 AM Service.
- Reed Yearwood provides fantastic guitar for the 6:30 PM Service.
- Thank you to everyone who shares their musical gifts at St. Michael.

Our life together is enhanced by special worship services and activities:

- Lenten meal and worship in partnership with Luther Memorial, Shiloh and New Mt. Zion
- Holy Week worship and activities in partnership with Shiloh and New Mt. Zion
- Easter Services at 7 AM, 9 AM, 11 AM and 6:30 PM
- Advent meal and worship (alternating between St. Michael and Luther Memorial) and activities
- Christmas Eve Worship Services at 4 PM, 7 PM and 11 PM



Education Ministries

Part of our mission as a congregation is to invest time in helping others to learn about God's Word, to grow faithfulness and to share God's story with our families and our community. In 2015, St. Michael offered a variety of educational opportunities to help families and individuals grow in their relationship with God. From September until May, Sunday School meets each Sunday morning offering classes for kindergarten through adults. This year, we implemented a new approach to Sunday School that focused on stories and music, arts, whole family learning and small discussion groups. We are blessed with wonderful leaders, teachers, and assistants who do a wonderful job of sharing God's Word with youth and adults.

Our Confirmation program seeks to equip young people with the tools they need to feel comfortable affirming their baptismal promises. It is a three-year program which consists of two overnight lock-ins and two mini-retreats per year to focus on different areas of a life of faith. In addition, students attend a week of Confirmation Camp during the summer after seventh grade.

Vacation Bible School was held in June with over 80 youths and adults participating. This year's theme was "G-Force". Classes were offered for youth of all ages and the middle school and high school youth led skits for the other groups. Thank you to all the teachers, music leaders, and families who provided the meals. It was a wonderful opportunity to learn more about Jesus.

In December, the youth shared a wonderful Christmas program attended by nearly 100 people. The youth and their adult leaders did a fantastic job sharing the story of Christmas.

Pastor John leads a Bible Study each Tuesday morning at 11 AM which focuses on the readings for worship. In addition to the Tuesday morning Bible Study, Pastor John also leads a monthly Sunday evening Bible Study which focuses on understanding our faith more fully.

In addition to the regular Bible studies led by Pastor John, the Women of the ELCA sponsored a monthly lunch and learn centered around the theme "Gathered by God" and the Happy-Go-Lucky Senior group includes a presentation and time of learning in each of its luncheons. This year, we also offered a one-day Mom's Retreat and started a discussion group for parents to help nurture families of faith. We also began a Pub Theology group in partnership with Christ Lutheran Church in Radford. The group meets monthly to talk about faith and daily life.

"You shall love the Lord your God with all your heart, and with all your soul, and with all your might. Keep these words that I am commanding you today in your heart. Recite them to your children and talk about them when you are at home and when you are away, when you lie down and when you rise." (Deuteronomy 6:5-7)



Youth Ministry

Looking back on 2015, St Michael's youth ministry had a very good year. There's much to celebrate. There's also much progress to be made in the coming years.

As a congregation, we celebrate youth participation in youth Sunday school and in youth group activities. Both programs became strong last year, and they remain strong. Through those two channels, our youth took part in the congregation's broader mission by meeting to study God's word and discuss ways to live out their faith. They were very active in vacation Bible school by conducting the opening and closing events and by assisting throughout VBS. In March, they assembled Easter baskets for the Salvation Army and the Women's Resource Center and in October, the youth wrapped gifts for the Montgomery County Christmas Store.

We also celebrate Sheila McCartan's leadership of the Lifelong Faith Formation Task Force and Jodi Smiley's classroom leadership of the youth Sunday school class and vacation Bible school.

Likewise, we celebrate our former and current youth ministry staff -- Lilly Goldsmith, Anna Lehman, and Alec Alderman. The three assisted with Sunday school and confirmation. They also led various youth events. We said farewell to Lilly and Anna until they graduated in May and Dec, respectively. Alec joined us in September 2015.

Please continue to support our youth ministry through prayer and by other means in 2016 and beyond.



Caring and Sharing Team

For God so loved the world that he gave his only Son, so that everyone who believes in him may not perish but may have eternal life. (John 3:16)

Purpose: This team seeks to provide an environment of love and caring within and outside the congregation.

Members: Fran Gallimore (chair), Carol Crawford, Sandy Birch, Deloris Raines, Anna Rossomando, Judith Wolfe, Keith Gay

Thank you! The Caring and Sharing Team offers **special thanks to St. Michael's members and friends** who supported this year's projects with their time, talents, and contributions.

Community Thanksgiving Dinner: Approximately 190 persons enjoyed the Thanksgiving meal. Special thanks to St. Michael members for preparing delicious side dishes. Volunteers from the area assisted St. Michael's members in serving the meal. Volunteer Coordinator: Fran Gallimore.



Price's Fork Fair Outreach Booth: Fran Gallimore, Pastor John, and several church members spent two days at the fair playing games and painting faces for children. This activity provided an opportunity to share St. Michael's ministry with the community. Handouts included faith-themed coloring books, grief resources, family devotionals and general information about the church. Volunteer Coordinator: Fran Gallimore

Salvation Army Angel Tree: 25 'angels' received gift packages of clothing, shoes and toys. Volunteer Coordinators: The Brewer/McCartan Family.

Shrove Tuesday Pancake Supper: This traditional activity brings people together for food and fellowship from St. Michael, Shiloh Lutheran Church, New Mt. Zion Lutheran Church and the Prices Fork area. Snow cancelled the planned date this year; however, we had pancakes on Maundy Thursday prior to Pastor John's message which concluded with communion.

Meals for Funerals/Illness: This very important congregational program was coordinated by Deloris Raines.

Second Sunday Summer Brunches: The Women of ELCA hosted the June brunch which recognized the high school and college graduates. The Caring and Sharing Team coordinated the July and August brunches.

To Our House: St. Michael participated in this area ministry which provides meals and shelter for up to 15 homeless men per night. Members provided meals on several dates. A day of meals consists of a simple breakfast, a bag lunch and dinner.



Softball Team: Men and women representing St. Michael enjoyed a successful season which began in April. Volunteer Coordinator: Jeff Birch.

Volleyball Team: St. Michael's Adult Co-Ed Team competed in the Christiansburg Parks and Recreation League on Tuesday evenings in the fall. Volunteer Coordinator: Ron Brewer

Boy Scout Troop: Jan Helge Bohn continued to serve as Scout Master of Boy Scout Troop 158.

Adventure Crew: St. Michael BSA Crew 158 serves boys and girls, ages 14 to 20. This program builds character, citizenship and leadership skills in older boys and girls. Adventure Crew Advisor: Sara Bohn

Stewards Team

The Stewards Team is called to promote understanding of congregational stewardship and encourage the sharing of our time, talents and treasures.

Time and talent surveys were completed in March and April, with again an excellent member response. Members of St. Michael volunteer to serve on committees and teams, teach in our Sunday School and Vacation Bible School, prepare food, maintain the church grounds, sing in our choirs, serve on Sunday morning as ushers, lay readers, acolytes, communion assistants, greeters, and altar care providers. During the year, many donated their time and talents to special projects such as representing St. Michael at the Price's Fork Fair, preparing Micah's backpacks with weekend food for elementary school children, providing food for Seniors in the "Soup for Seniors" program, and preparing and serving food for homeless shelters.

A regular feature in the monthly newsletter, *Sharing Our Gifts: Time, Talents and Treasure*, is devoted to recognizing servants who volunteered their time and talents for numerous tasks and activities at the church and thanking the congregation for participating in a variety of projects throughout the year.

Estimates of giving for 2016 were distributed with a theme of "Taking an Additional Step Up in Giving" to help continue the Ministry and Community Support at St. Michael.

Examples of how St. Michael invests God's gifts in the community and in the world.

- Food and paper goods for the Montgomery County Food Bank
- Food, cleaning supplies, paper goods, and baby items for the Women's Resource Center
- School supplies and family baskets for Prices Fork Elementary School
- Christmas gifts for 25 children sponsored by the Salvation Army Angel Tree project
- Over 49 Easter baskets for children at the Women's Resource Center and the Salvation Army
- 304 Christmas shoebox gifts for Head Start children on the Pine Ridge Indian Reservation in South Dakota (a joint project with other New River Lutheran churches, Christ the King Lutheran in Richmond and other groups such as the DAR); mailing prepared at "Party with a Purpose" in November; extra supplies, e.g., quilts, socks and gloves sent to a Lutheran Ministry in Pine Ridge.
- An average of 10 flower arrangements for Heritage Hall created weekly from altar flowers
- \$3,120 for the Montgomery County Emergency Assistance (MCEAP) program.
- Assistance to 198 families for rent and medical expenses, electric and water bills, heating oil, food and other expenses from the Justice and Mercy Fund
- \$22,500 donated to the Virginia Synod to support ministry in the Synod, the country and in the world
- \$1,200 to Bedford Lutheran, our Mission Partner
- Donations of \$447 designated for our Lutheran Theological Southern Seminary partner
- Food and funds for the annual community Thanksgiving dinner
- Meals for "To Our House" homeless shelter
- Mother and Father gifts for the Montgomery County Christmas Store
- \$4,000 to Lutheran Campus Ministries
- \$10,691 (for 2014-2015 school year) given by St. Michael members along with Food Donations for Micah's Backpack which now assists over 280 children in 5 area elementary schools, one middle school, one high school and three preschools.

- Monetary, Food, and Time Donations for Micah's Initiatives including Soup for Seniors, Micah's Closet, and Micah's Garden

Stewardship of our earth is emphasized through newsletter articles and postings on the hallway bulletin board. St. Michael continues to take good care of our earth by such actions as recycling eye glasses, used ink cartridges, cell phones, using recycled copy paper, and providing recycling bins in the church for paper and cardboard.

The stewardship of our congregation is exceptional and **We Thank All of You.** Our annual catered brunch was held in December to honor all the St. Michael stewards. You are generous supporters of the ministry at St. Michael, in the community and the world.

Submitted by The Stewards Committee Members:

Sandy Birch, Pastor John, Andrea Robinson, Hank Schneider (chair), Ben Simmers, Jody Smiley

We offer with joy and thanksgiving what He has first given us—ourselves, our time, and our possessions, signs of His gracious love.



Women of the ELCA (WELCA)

As a community of women created in the image of God, called to discipleship in Jesus Christ, empowered by the Holy Spirit, we commit ourselves to grow in faith, affirm our gifts, support one another in our callings, engage in ministry and action, and promote healing and wholeness in the church, society and the world.

WELCA is led by a team of three: Jody Smiley, Sandy Birch and chaired by Alice Schneider.

We began the year with a study “Gathered by God”. Lunch and Learn meets at the church monthly during the school year. All women are invited to this Bible study led by Jody Smiley and fellowship meal held at noon.

Projects and activities for 2015 include the following:

- Sponsored donations for the Montgomery Food Bank and Women's Resource Center.
- Enjoyed dinner out at Amelia's in January and Olive Garden in July.
- Provided 40 Easter baskets with small toys, books and treats for children. Nine additional baskets were filled with personal hygiene products and treats for mothers. The baskets were filled by our 5-12th graders for a service project. They were delivered to the Women's Resource Center and Salvation Army.
- Easter brunch was enjoyed following the 7 am sunrise service. The Second Sunday Summer Brunch in June celebrated St. Michael graduates of the year.
- Bold Women's Day was led by women at all three services on May 10th. Women joined together to sing a hymn during the morning services.
- Through Love offering “baggies”, the congregation donated \$593.31 for malaria nets in Papua New Guinea.
- Sponsored the Sisters in Christ Luncheon May 3 featuring some interesting stories about Katie Luther.
- Jody Smiley, WELCA national vice president, attended the Annual VSWO (Virginia Synodical Women's Organization) Convention held on August 14-15 at St. Mark's Lutheran in Yorktown. The theme centered on “Bold Women Called by Christ.” The VSWO project for the year was sewing cloth drawstring bags for foster children to carry some of their belongings. We made 78, and a total of 1,006 were brought to convention, which were donated to Social Services in the Tidewater area.
- For the beginning of school in August, boxes were filled with hundreds of school supplies and 5 backpacks, all donated to Price's Fork Elementary.
- On September 27, we celebrated St. Michael's 47th anniversary with our annual birthday dinner which featured Italian food catered by the Cellar Restaurant. Each table had a different dessert, made by church members. A \$60.00 donation was sent to the Christmas Store.
- On October 11, the women of St. Michael hosted the women of the New River Valley district at our

annual Fall Gathering. We enjoyed tea, some delicious “Bold Desserts” and finger foods. Ellen Hinlicky, Director of VA Lutheran Partners in Mission, was our featured speaker. She showed photos of and spoke about “Seven Remarkable Lutheran Women”. We collected canned fruit for the Interfaith Food Pantry. The offering of \$212.00 was split between VSWO and the Betty Wilson Scholarship Fund, which will help a young woman attend the 2017 WELCA Triennial Conference.

- On November 15, adults worked with Sunday School youth to organize shoeboxes for the Pine Ridge Indian Reservation in SD. This year, 304 shoe boxes were checked, decorated, and labeled. They were donated by New River Valley Lutheran churches, the D.A.R and Christ the King in Richmond. Ron Brewer delivered them to Fontaine Modifications in Dublin, who again donated the shipping cost. We also shipped a box of handmade baby blankets, throws, art supplies, toys, lots of additional hats & gloves, etc. which did not fit in the shoeboxes, for the homeless program at Pine Ridge.

- In December we provided five family fun night baskets for Price's Fork School families. Funds for six additional baskets were provided by Thrivent.



Submitted by Alice Schneider, chair

Men in Mission

The Men in Mission group is “on-call” to support the programs of St. Michael and provide community service as needed.

In 2015, the Men in Mission:

- unloaded the Micah’s Backpack pick-up truck one Wednesday each month;
- weeded the flower beds of a St. Michael member; and
- directed traffic in the parking lot of the Montgomery County Christmas Store and assisted shoppers with unloading their carts on December 12.

Jeff Birch, Coordinator



Older Kids (O.K.s) Senior Ministry

An active group of “over 50’s” had a number of opportunities for fellowship during the year. The Happy-Go-Lucky group, mostly retirees, met every other month (usually the second Tuesday) for a catered luncheon and program in the fellowship hall. The fall started out with a “gourmet” school lunch served on school lunch trays, followed by a Virginia Tech tailgate in October with Anna Rossomando’s famous barbeque. December featured a 5-course Christmas luncheon and participants had to “sing (Christmas carols) for their supper” between courses. We thank our caterers, Lynn Hickok, Barbara Corbett, Alice Schneider, Sandy Birch and our set-up/clean-up helper, Anita Shepherd, for supporting this activity. A \$5/lunch contribution for groceries is always appreciated, though not required. Friends from Shiloh and New Mt. Zion and other churches often attend the luncheons and add to the fellowship.

Special guests joined us for lunch on several occasions, e.g., Isabel Birney and Sandy Schlaudecker from the Funeral Consumers Alliance in February when we discussed writing our own obituaries. In June, Joyce Coupey revealed ways to share our histories with our families.

The “Out to Lunch Bunch” met for lunch on six occasions at local restaurants, usually on the 4th Tuesday. Restaurants visited in 2015 included the Social House, Cabo Fish Taco, Sal’s, CineBowl & Grille, the Golden Corral (during its opening week) and the Outback Steakhouse. Many thanks to Peggy Brown for organizing these luncheons.



The O.K.s also went traveling in a cooperative program with the Montgomery County Parks and Recreation Department. In 2015, the bus took us to The Settler’s Museum of Southwest Virginia in Atkins, VA and the Appalachian Arts & Crafts Fair and Coal Mine Exhibition in Beckley, WV. All members of the congregation and friends and family are invited on the bus trips. Pictured is the group standing on the Appalachian Trail which passes through the Settler’s Museum.

The O.K.s supported a collection of gifts for moms and dads for the Montgomery County Christmas Store. Announcements posted on the hallway bulletin board and in the newsletter keep the O.K.s informed of AARP and other senior organizations’ activities throughout the year.

The younger O.K.s, known as the “middle-agers” support activities such as Soup for Seniors packing and distribution and may meet for social events on occasion. The middle-agers are loosely described as those “between PTA and AARP” and not yet retired.

Sandy Birch, Lay Associate in Ministry

Lutheran Campus Ministry at Virginia Tech



PROGRAM

The ministry is based on a community of students identified with the Well that meets weekly on Tuesday in the campus student center. The focus of this group is best identified in the mission statement, which the group formalized this year.

“Because God loves us and calls us to love, we welcome and invite others to engage and grow in faith. Through discipleship and active service in our community, we are able to intentionally deepen our relationship with God and one another.”

Although worship is part of the experience at the Well, students are encouraged to engage in the ministry of Word and Sacrament in a local congregation. On average, 20 students worship at LMLC. Some, but not all, of these students participate in the Well and weekly worship, while other students only worship on Sunday.

The leadership team, Eric Bass, Samantha Dibiaso, Anna Lehman, Tommy Hyres, and Casey Parrett, provided energy and direction for the ministry. Usually 12-18 students formed the key group this year. Leaders presented temple talks to LMLC and SMLC expressing gratitude for their support of the ministry. The secretary, Samantha Dibiaso, prepares the news and updates for the weekly worship bulletin at LMLC. Students elected Rachel Magri and Adam Malinchak to the leadership team for positions vacated for the remainder of the academic year.

In the spring, participants in the Well served several of the service projects established by Virginia Tech including the Big Event and Relay for Life. In the fall, we celebrated a Thanksgiving dinner, hosting students from the Episcopal campus ministry. Leaders provided a retreat for women that involved students from Roanoke College. Collaborations encourage the emerging Lutheran Campus Ministry at Radford University. Pastor Joanna shared leadership with the campus pastors in the Interfaith Council at VT, led worship with the Corps of Cadets at the beginning of fall semester, and supported a renewed network for campus ministries across the synod.

EVALUATION

The ELCA completed a quadrennial review of the ministry this October. Reverend Harvey Huntley, Region 9 ELCA; Reverend David Delaney, Virginia synod; and Jennifer Mannis, Diaconal Minister, interviewed students, faculty and congregational leaders to assess the effectiveness of ministry as well as examining program, financial support, and facilities. This first evaluation of the Well, supported by a half-time campus pastor, was positive. The ministry is eligible to receive operating grants from the ELCA and Virginia Synod through January 31, 2020. We are expected to prioritize ministry areas for the next several years.

The committee evaluated financial resources through conversations with Bill Knocke from the Committee on Finance. We established a structure for reporting expenses and income that were approved in the congregational spending plan for 2016. The half-time salary and benefits for Pastor Stallings and program expenses are specific costs. LMLC provides in-kind support for housing the ministry with attendant custodial and utility expenses, office, copying, and mailing costs.

FINANCIAL SUMMARY

Ministry specific income to support Campus Ministry depends on grants from the Virginia Synod, St. Michael Lutheran Church, and the ELCA. Specific gifts, and revenues generated for parking fees contribute approximately \$13,607 to the total.

Excluding in-kind expenses or income, please review the financial report of the congregation to determine the details for the following financial summary.

Campus Ministry expenses	\$52,329
Campus Ministry specific income	\$63,896

APPRECIATION

We thank the following persons who provided meals, including L3: Teresa Cassell; John and Ann Hess; Jennifer and Michael McDonald; St. Michael Lutheran Church; Pastor Joanna; Barb and Joe Straub.

Committee Members: Alex Depew, John Hess, Lori Anne Kirk (SMLC), Casey Parrett (President of the Well), Rebecca Pettit, and Jody Smiley (SMLC)

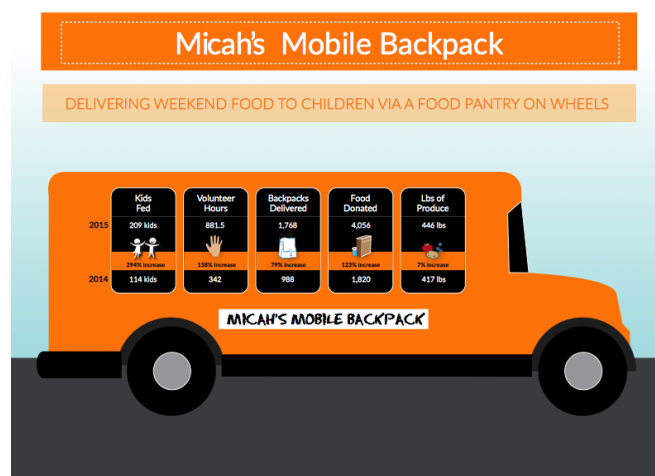
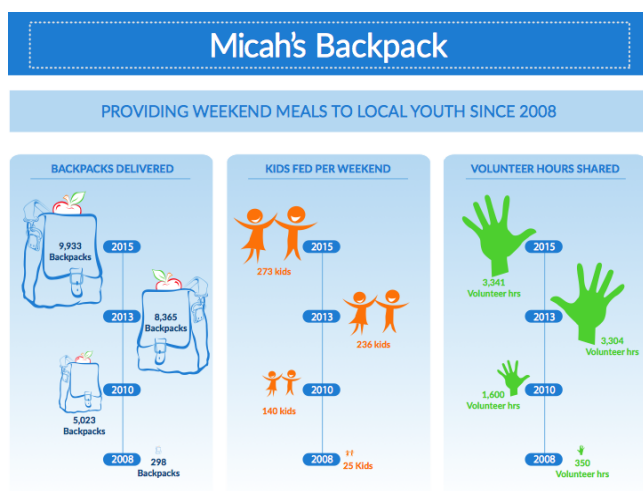
Prepared by John Hess and reviewed by Committee, February 2016.





Micah's Backpack, a free, community-based ministry feeds children from low-resource families 6 meals and snacks on the weekends throughout the academic year and summer vacation. Here's our 2015 report.

- By December 2015, we expanded to include 5 children at the Rainbow Riders Head Start that meets at St Michael. 270 kids at 10 schools participate every weekend during the academic year.
- Began sending thank you letters via email and saved over \$60 in postage.
- Worked with Make a Mark team to create refreshed branding of all the Micah's Caring Initiative logos. Worked with our volunteer web designer to update and improve the MCI websites. <http://micahci.org>
- Created the Cummings and Ivers Challenge Gifts to fund infrastructure that brought in \$8,200.
- Engaged up to 120 volunteers (from the young to the young-at-heart) to participate on a weekly basis during 2015 sharing 4,259 hours.
- Grants awarded from the Adobe Community Foundation, Blacksburg Presbyterian Church Endowment, the Community Foundation of the NRV, and Kroger.
- Men in Mission participated monthly by unloading the truck and shelving the food from Feeding America and Sam's Club.
- 3 students from VT served as interns during the fall and spring semesters. We had 1 summer intern.
- Shared 10,608 meals plus 446 pounds of fresh produce from Micah's Garden and 3 Birds Berry Farm on Micah's Mobile Backpack.
- Partners gathered and shared 39,517 items during food drives.
- Expanded the Mobile Backpack route to include Cambridge Square.
- Partnered with faculty and staff at Harding Avenue and Price's Fork Elementary School who provide books on Fridays on the mobile backpack.
- Jennie participated in the Food Studies Conference at VT with a talk called "Communities + Universities = Impact"
- For more information about Micah's Backpack, please contact Jennie Hodge (jennie@micahsbackpack.org).



St Michael established Micah's Garden, a cooperative community garden, in the spring of 2012.

In 2015, Micah's Garden:

- Partnered with four food pantries: Giving Tree, Interfaith, Spiritual Roots and Micah's Mobile Backpack to distribute fresh produce.
- Expanded the variety of vegetables and fruits grown and shared and increased our yield by just under 11%. Shared 1,802 pounds of fruits and vegetables.
- 40 volunteers shared 212.6 hours helping sow, grow, harvest, and deliver 1,802 pounds of basil, beans, beets, blueberries, cabbage carrots, collard greens, corn, cucumbers, lettuce, okra, peppers, potatoes, spinach, squash, tomatoes, Swiss chard, and zucchini, shared!
- Laura and Seth Perry continued to designed plot maps to make planting and harvesting easier.
- Kids who visited the mobile backpack loved choosing fresh vegetables!
- For more information about Micah's Garden, please contact Jennie Hodge (jennie@micahsbackpack.org).



Micah's Soup for Seniors (MSS) had a great 2015. We have continued in this ministry with great support from the church, church members, community volunteers, and Warm Hearth.

Some of our outside partners include Panera, Warm Hearth, Chi Delta Alpha and classroom involvement from the VT Department of Human Nutrition, Foods, and Exercise.

Some special notes from this year:

One of our interns provided educational literature to include each month in the bags that we pack. Two students from the Human Nutrition class helped provide guidance for a newer menu that added some new items for the Seniors, including V8 juice, microwave rice and mac and cheese, granola bars, chickpeas and pretzel packs.

MSS was started in September 2012 as a way to provide extra food for low-income seniors at three houses at Warm Hearth: North Trollinger, South Trollinger and the New River House.

MSS volunteers pack and distribute on the fourth Tuesday of each month. We deliver approximately 90 bags a month. Each bag contains soup, tuna or peanut butter, vegetables, fruit, rice and beans. The seniors fill out a menu each month for what they would like to have delivered the next month. MSS has 20-25 volunteers who help out each month. We also have a partnership with Panera which provides us with leftover bagels, breads and sweets each month.

Since September 2012, Micah's Soup for Seniors:

- Received over 5,500 donated food items
- Delivered approximately 3,600 bags of food
- Worked approximately 1,800 volunteer hours



For more information about Micah's Soup for Seniors, please contact Dianne Krallman (Dhkrallman@hubbell-ltg.com).



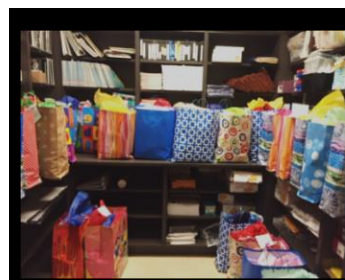
"Dear Micah's Closet: Prices Fork Elementary School would like to thank you for all the amazing ways that you have blessed our students and families. Thank you for the generosity, love and compassion that these gifts reflect. You have given so many of our students a sense of dignity and care. We are deeply grateful for all that goes into these gift bags. Thank you from the bottom of our hearts. This is an amazing example of love."

"To Micah's Closet: I would like to thank you with all my heart, for the gift bags of clothes for my grandchildren. They did not have clothes suitable for cold weather. This gift was unbelievable. I became very emotional when the items were taken from the bags. Everything fits the children perfectly. Thank you, God Bless you."

The goal of Micah's Closet (MC) is to provide up to a week's worth of new school clothes to children in need, through a partnership with schools, churches, community groups, businesses, and individuals. Studies show that children in need are more likely to have higher self-confidence and maintain regular school attendance if their clothes are as nice as clothing worn by their peers.

In 2015:

- MC had over 28 unique volunteer shoppers, including 10 from the Blacksburg's Newcomers Group!
- Judy Clemens, in partnership with the New River Community Services, provided 228 specific clothing items to children in need throughout the year.
- MC reached a total of 74 students at Prices Fork and the Blacksburg Head Start Program with the Spring and Fall clothing distributions, up from the 49 students reached in 2014.
- In the Spring, shirts and shorts were distributed. In the Fall distribution, MC shared shirts, pants, athletic shoes, pajamas, socks, underwear and a jacket.
- A total of 1784 items of clothing were shared with children in our community during 2015!
- Through the help of the Micah's Backpack team, MC received its first grant money in 2015 helping to provide clothing for approximately 20 students.
- For more information about Micah's Closet, please contact Sheila McCartan (mccartansheila@gmail.com).



Property Committee

Purpose: The property committee's main function is to oversee the church property, making improvements and repairs as needed.

Regular activities included

- Overseeing the seasonal clean-ups
- General upkeep and mowing of the grass
- Removing snow -- 2015 was another big year for snow removal
- Spraying monthly for insects
- Spraying for weed control
- Ongoing maintenance and repair -- needed to repair both big mowers in 2015

Facility improvements included

- Construction of Phase 2 of the Circle of Grace Scattering Garden

Special Thanks

To all those folks who work behind the scenes who are a major part in the upkeep and maintenance of our church including...

- Ray Howell and Ron Brewer for their help in addressing our maintenance issues
- The "Mowing Crew" that mows and keeps our grounds looking nice
- Those who weeded the flower beds
- Marty Gordon who serves as our church custodian
- Wanda Pascoe who makes sure that needed cleaning supplies are on hand
- JC Martin for donating time, staff and equipment for construction of Phase 2 of the Circle of Grace



Memorial Committee

The Memorial Committee meets on an as needed basis to act on Council recommendations or conduct other business related to overseeing the use of all money donated to St. Michael as memorials.

- This past year \$1150.00 of designated Memorial Funds were spent to buy trees for the Circle of Grace.
- Donations in memory of Maelie Nagle, \$25.00, Tim Clemens, \$25.00, Esther Birch, \$50.00, Roscoe Turman, \$1405.00, and Grace Simmers, \$610.00, for a total of \$2115.00, went into the Memorial Fund.
- Donations in memory of Martha Cassell, Tinley Rose Scharnus, Debbie Leighton, Jay McCallum, Ealine Blackford's mother, Faye Dryer, Ray Wingate, and Winnie Saia went into the Micah's Backpack Fund.
- Donations in memory of Carolene Perkins, Grace Simmers, Claude and Nancy Pugh and Jan Blum went into the Soup for Seniors Fund.
- Donations in memory of Gary Christle went into the Boy Scout memorial project.
- Donations in memory of Grace Simmers and Winnie Saia went into the Micah's Closet Fund.
- Donations in memory of Esther Birch, Grace Simmers and Fred Spengler went into the Circle of Grace fund.
- Donations in memory of Grace Simmers, Roscoe Turman and James Sherman went into the Micah's Backpack Infrastructure Fund.



The committee is always available to answer questions or assist a family in choosing a memorial gift. Members of the committee are: Bob Brown, Cindy Dowdy, Jim Clemens-Chair, Jay Nagle, Donna Oliver and Sandy Birch

Jim Clemens
Chair

2015 Investments in Ministry through the Core Ministry Fund

	<u>Projected 2015</u>	<u>Actual 2015</u>
Giving in Support of Spending Plan for Ministry and Other Ministry Generated Resources	\$227,500	\$204,853
Sharing Our Gifts Includes gifts to Virginia Synod, Campus Ministry at Virginia Tech, and salary for Micah's Backpack staff	\$37,900	\$34,248
Worship Includes Supplies for Worship and Music Programs and Salaries	\$24,086	\$25,098
Youth and Education Ministry Includes Youth and Family Programs, Sunday School, Vacation Bible School and Child Care Staffing	\$11,710	\$9,882
Caring and Sharing Includes Fellowship Events, Softball and Volleyball Teams, Publicity, Future Programs and Associate in Ministry	\$8,623	\$8,219
Pastoral Support Includes Salary, Benefits, and Continuing Education	\$101,591	\$100,749
Parish Administration and Support	\$26,752	\$24,136
Property	\$20,450	\$16,937
Total Spending Plan for Ministry Investment	\$231,112	\$219,269

Notes:

1. *Spending in the Core Ministry Fund exceeded giving by \$14,416.*
 2. *Total Giving to All Funds in 2015 (including Core Ministry Fund, Growing with Faith Fund, Justice and Mercy Fund, Micah's Backpack and other Restricted Funds) was \$437,658.*
 3. *Through the Justice and Mercy Fund, St. Michael provided \$8,214 in direct assistance with rent, power bills and fuel. The balance in the account at the end of 2015 was \$5,882.93.*
 4. *The Balance in the Property Maintenance Fund at the end of 2015 is \$15,053.*
- A total of \$63,963 was donated to the Growing with Faith Fund and \$54,412 was invested in mortgage payments for 2015. The mortgage balance with Thrivent at the end of 2015 is \$390,867.70.*

**Micah's Caring Initiative
2015 Investments in Ministry**

Micah's Backpack and Micah's Mobile Backpack: Providing weekend meals for 280 students per weekend during the school year and 160 students during the summer

Donations and Grants	\$100,377
----------------------	-----------

Expenses

Food	\$ 58,442
------	-----------

Infrastructure Support	\$ 6,141
------------------------	----------

(including bus fuel, insurance,

Director stipend, t-shirts)

Total Invested	\$ 64,583
----------------	-----------

Micah's Soup for Seniors: Providing approximately 90 bags of food at the end of each month to low-income seniors in the community

Donations and Grants	\$ 6,143
----------------------	----------

Expenses

Food	\$ 9,610
------	----------

Infrastructure Support	\$ 34
------------------------	-------

Total	\$ 9,644
-------	----------

Micah's Closet: Providing clothing at the change of season for low-income students in our community

Donations and Grants	\$ 6,136
----------------------	----------

Expenses: clothing	\$ 9,019
--------------------	----------

Notes

1. *Some grants and donations received in 2015 by Micah's Backpack are designated for use in 2016.*
2. *Some grants and donations used in 2015 by Micah's Soup for Seniors and Micah's Closet were received in 2014 and are not reflected on this report.*

2016 Investments in Ministry Plan

Investments in Ministry Partnerships: Sharing Our Gifts	<u>2016</u>	<u>2015</u>
Virginia Synod and ELCA	22,500	22,500
Mission Congregation Partnerships	1,200	1,200
Montgomery County Emergency Assistance Program	1,560	3,120
Community Ministry Support	500	900
Campus Ministry at Virginia Tech	2,500	4,000
Micah's Backpack Staff Support	<u>8,000</u>	<u>6,180</u>
Total	36,620	37,900

Investments in Core Ministries: Worship	<u>2016</u>	<u>2015</u>
Choral Director	7,248	7,248
Choral Director Continuing Education	600	600
Music and Choir Supplies	1000	1000
9:00 AM Accompanist	2,951	2,951
11:00 AM Accompanist	7,377	7,377
6:30 PM Accompanist	2,210	2,210
Accompanist Continuing Education	600	600
Instrumentalist	0	400
Organist Substitutes	600	150
Inserts and Bulletins	500	500
Altar Supplies	550	550
Miscellaneous	<u>500</u>	<u>500</u>
Total	24,136	24,086



Investments in Core Ministries: Caring and Sharing	<u>2016</u>	<u>2015</u>
Associate in Ministry	5,123	5,123
Associate in Ministry Continuing Education	200	200
Fellowship	800	800
Evangelism/Publicity	300	600
Sports Teams	450	450
Older Kids Senior Adult Ministry	400	400
Future Programs	300	500
Appreciation	700	400
Miscellaneous	<u>100</u>	<u>150</u>
Total	8,373	8,623

Investments in Core Ministries: Youth and Education Ministry	<u>2016</u>	<u>2015</u>
Youth	----	----
Youth Activities	1,800	1,700
Family Programs	1,200	1,200
Youth Ministry Staff	2,400	2,880
Nursery Worker	2,000	2,000
Education	----	----
Christian Education	1,200	1,300
Confirmation	3,300	1,200
Subscriptions/Devotionals	500	1,400
Miscellaneous	<u>50</u>	<u>50</u>
Total	12,450	11,210



Investments in Core Ministries: Faith Milestone Ministry	<u>2016</u>	<u>2015</u>
New Baby Ministry	25	75
Faithchest Resources	125	225
Faith Builders Toolbox Resources	150	150
Grief Resources	<u>25</u>	<u>50</u>
Total	325	500



Investments in Core Ministries: Pastoral Support	<u>2016</u>	<u>2015</u>
Salary	37,880	39,458
Housing	20,655	21,516
Pension, Insurance	33,400	25,884
Social Security	7,088	7,383
Mileage Reimbursement	4,000	5,000
Supply Pastor	975	0
Continuing Education, Professional Expenses	<u>1,600</u>	<u>2,350</u>
Total	105,598	101,591

Investments in Core Ministries: Support	<u>2016</u>	<u>2015</u>
Materials	0	50
Workshop	0	100
Miscellaneous	<u>0</u>	<u>50</u>
Total	0	200

Investments in Core Ministries: Parish Administration	<u>2016</u>	<u>2015</u>
Administrative Assistant	11,302	11,302
Social Security	3,600	3,600
Office Supplies	1,500	1,600
Postage	1,600	1,300
Copier Maintenance	2,100	3,700
Telephone	300	900
Internet and Online Services	1,600	2,100
Conventions and Conferences	850	850
Staff Retirement Assistance	700	700
Miscellaneous	<u>500</u>	<u>500</u>
Total	24,052	26,552

Investments in Preventative Maintenance and Ongoing Restoration	<u>2016</u>	<u>2015</u>
Improvements	<u>0</u>	500
General Maintenance & Repairs	<u>0</u>	750
Insurance - Church	4,200	4,200
Custodian Services	<u>3,000</u>	3,200
Utilities	<u>5,200</u>	4,200
Snow Removal	500	500
Pest Control	400	400
Capital Replacement	<u>0</u>	3,600
Miscellaneous	<u>100</u>	<u>100</u>
Total	13,400	20,450

Ministry Fund Spending Plan vs. Projected Giving	<u>2016</u>	<u>2015</u>
Total Spending Plan for Ministry	224,954	231,431
Projected Core Ministry Fund Giving	208,000	201,000
Designated Gift for Youth Ministry Staff	4,000	3,000
Ministry Generated Resources: Head Start	9,000	0
Grant Support for Micah's Backpack Staff Support	4,000	3,000
Total Estimated Support for Core Ministry Fund	225,000	207,000



Investments in Preventative Maintenance and Ongoing Restoration:	<u>2016</u>
Landscaping & Maintenance	2,500
Equipment Maintenance	500
HVAC Control System Replacement	2,000
Heat Pump Maintenance	<u>1,870</u>
Total	6,870

Investments in Growing with Faith Fund: Monthly Mortgage vs. Estimated Giving	<u>2016</u>
Monthly Mortgage on Classroom Addition	55,284

Notes on 2016 Investment in Ministry Plan

- Thank you for your generous support of God's ministry at St. Michael. Together we are touching people's lives with God's Word and making a difference in our community.
- As we approach the end of the year, it appears that giving to the Core Ministry Fund in 2015 will total about \$201,000. Due in large part to a larger than usual number of families and individuals moving out of the area, our projections for giving for 2015 proved to be incorrect. The Council began adjusting our Investment in Ministry Plan in 2015 to more closely match actual giving and developed a plan for 2016 to match this year's giving predictions.
- Ministry generated resources including funds raised for Micah's Backpack Infrastructure Support, Focus on Youth gifts and the stipend from the Head Start partnership will add an estimated additional \$18,000 of support for the Core Ministry Fund.
- Over the years, St. Michael has built up reserves to cover excess or unexpected expenses during a giving year. In 2015, we will use approximately \$10,000 from our reserve fund which will leave approximately \$30,000 available for future years in the fund. The last time we made use of those funds was in 2008.
- The main areas of growth in the 2016 Investment in Ministry Plan are in Micah's Backpack and Youth Ministry as we seek to expand our support for ministry with children and youth. There will potentially be 9 students attending confirmation camp this summer which accounts for the large increase in confirmation costs.
- For the last 7 years, St. Michael has consistently given 2 to 3% raises to staff members. This year's plan does not include a raise.
- Pastor John's cost of compensation will increase by nearly \$4,000, but his salary will decrease by 4% due to an increased cost for benefits. The combination of an 8% increase in health care cost and re-enrolling Kris in the health care plan account for the significant increase in cost.
- As in 2015, St. Michael will share over 16% of our gifts to the Core Ministry Fund with ministries outside of the congregation.
- The plan projects a balanced plan for 2016.