

ST MICHAEL LUTHERAN CHURCH  
BLACKSBURG, VIRGINIA

# 2008 Annual Report

Respectfully submitted  
by the  
Church Council and the Committee Chairs  
to the Congregation



Directory and Information for 2009



# TABLE OF CONTENTS

Those called to Special Service .....	1
Pastor's Report.....	2
Statement of Mission .....	3

## MINISTRY TEAM REPORTS

Campus Ministry.....	4
Caring and Sharing .....	6
Education .....	8
Property.....	9
Stewards Team .....	10
Worship .....	12
Memorial.....	14
Memorial Fund - 2008 .....	15
Women of the E.L.C.A.....	16
Men in Mission .....	18
Investments in Ministry .....	19

## FINANCIAL REPORTS

2009 Spending Plan for Ministry.....	20
Notes on the 2009 Spending Plan for Ministry.....	22
Facilities Expansion Task Force Report.....	24
Trends in Worship Attendance .....	26

## APPENDIX

Church Directory .....	28
------------------------	----



# THOSE CALLED TO SPECIAL SERVICE

	2007-2009	2007-2009	2008-2010
Congregational Council	Randy Robinson Ben Simmers Tammie Veit	Ben Crawford Rick Mayer Andrea Robinson	Nancy Franz John Krallman Gary Worley

## Officers of the Congregational Council

President.....	Ben Crawford
Vice President .....	Gary Worley
Secretary .....	Tammie Veit
Financial Officer .....	John Krallman
Financial Secretaries .....	Jim Clemens
.....	Cindy Dowdy
.....	Ben Simmers
Current Fund Treasurer.....	John Krallman
Recording Secretary.....	Doug Smiley
Memorial Fund Secretary/Treasurer .....	Cindy Dowdy
Sunday School Secretary .....	Jim Clemens
.....	Doug Smiley

Trustees	Jeff Birch Fran Shepherd	Jim Clemens Ben Simmers	Betty Gross Dave Surface
----------	-----------------------------	----------------------------	-----------------------------

## Ministry Team Leaders and Ministry Staff

Worship Committee .....	Carol Bland
Caring and Sharing .....	Carol Crawford
Finance.....	John Krallman
Stewards/Support .....	Sandy Birch
Property.....	Fran Shepherd
Memorial.....	Jim Clemens
Women of the ELCA.....	Alice Schneider
Lutheran Men in Mission.....	Jeff Birch
Lay Associate in Ministry .....	Sandy Birch
Administrative Assistant .....	Suzanne Gay
Choir Director and 11 AM Organist.....	Donita Moore
9 AM Pianist .....	Brandy Buckles
Nursery Worker.....	Lauren Harber
Custodian .....	Joanne Pascoe
Webmaster.....	Philip Isenhour

# PASTOR'S REPORT



## St. Michael Lutheran Church

2308 Merrimac Road

Blacksburg, VA 24060

(540) 951-8951

Rev. John Wertz, Jr., Pastor

January 31, 2009

Dear Brothers and Sisters in Christ,

2008 was marked by new beginnings and bold steps forward in ministry.

- In January, Sandy Birch began her ministry as our Lay Associate in Ministry and Suzanne Gay began her ministry as our Administrative Assistant. Together, they have strengthened and expanded St. Michael's ability to tell the story of God's love in our community. It is a pleasure to have them as a part of the St. Michael Ministry Team.
- Education and Youth programs have continued to grow. Over 45 people participated in Vacation Bible School, about 40 people participate in Sunday School each week, weekly and monthly Bible Studies reach 20 to 25 people per month and Youth Night is connecting God's word with 15 to 20 youth per month.
- Throughout the spring and summer, we explored the possibility of adding to our facilities and then in August approved construction of the "Phase 1 - Classroom Addition". Ground was broken for the new space in September and construction began in October. Thank you to everyone who has given of their time and resources to make this expansion a reality.
- In the fall, we expanded our care for God's people in need and efforts to serve God in our daily lives by founding Micah's Backpack, a feeding ministry for low-income youth in our community. Micah's Backpack is a partnership with Price's Fork Elementary School, Kipps Elementary School and other organizations in the community. The program builds on our strong commitment to fighting hunger through programs like the Community Thanksgiving Meal and food collections for the Montgomery County Emergency Assistance Program.
- At both the 9 AM and 11 AM Service each Sunday, we hear God's love proclaimed through Word and Sacrament. Our overall average worship attendance grew by 5% in 2008 to 141 people per Sunday. With God's help, we continue to invite more people to be a part of the ministry and community of St. Michael.

I look forward to 2009 and the opportunities for ministry which are before us as we complete the classroom addition, as we explore ways to use the space to more fully support our mission and ministry and as we seek ways to do justice, to love kindness and to walk humbly with our God. I give thanks for all those who share their gifts to make the ministry of St. Michael a powerful witness for God in our community. May God's presence be with you.

Peace and hope,

*Pastor John*

John Wertz, Jr., Pastor

## STATEMENT OF MISSION

As a community of believers guided by the Holy Spirit, the mission of St. Michael Lutheran Church is to:

C

*Care* for God's people in need,

H

*Hear* God's love through Word and Sacrament,

R

*Respond* to God's grace with thankful hearts,

I

*Invite* others into Christ's community,

S

*Serve* God in our daily lives, and

T

*Tell* the story of God's love for all.

In short, our mission is CHRIST -- loving Christ, serving Christ, following Christ, praising Christ, being saved by Christ. May God's Spirit fill us with joy and the dedication in our ministry together in all the days to come.

## CAMPUS MINISTRY COMMITTEE

The Campus Ministry Committee at Luther Memorial continued to provide support and guidance to both the mission and the activities of the campus ministry program at Luther Memorial in 2008. In addition to providing guidance to the pastors and students of the Lutheran Student Movement group, the Campus Ministry Committee helped organize Luther's Luscious Lunches (L-cubed) and year-end graduation festivities for graduating students. Below are some of the activities that the Lutheran Student Movement (LSM) was involved with during the 2008 program year:

- Attendance at worship services by students has been between 20 – 30 students each Sunday. Students participate during worship services by volunteering as lectors, ushers, communion assistants, etc.
- At LSM Tuesday evening events, the attendance has been between 16 – 25 students.
- Service projects included helping with game day parking, a Halloween Trick or Treat for the Hungry canned food drive, participation in the "Big Event" with Virginia Tech, service at Kipps Elementary School, and an evening of babysitting for the younger families of LMLC.
- Each year students participate in an Alternative Spring Break service project. Last year LSM students along with some recent alums and congregational members went to Lutherstadt, Eisleben, Germany. The group stayed in a hostel run by one of the congregations in Eisleben. The primary purpose of the trip was to assist in renovating a 500 year old building owned by St. Andrews Church. They spent two days sanding, priming, and painting windows and doors for the office and Sunday School rooms. While there, the group was able to travel to other Martin Luther sites such as Wartburg, Wittenburg, and Erfurt. This year's Alternative Spring Break will be in Nashville, TN and will involve issues of domestic violence.
- The students attended an LSM Regional Retreat at Camp Hope near Chapel Hill, NC from September 26 – 28, 2008.
- The LSM National Gathering in 2008 was in Denver. Pastor Stallings attended with 5 students. Pastor King attended the 2009 gathering from Dec. 31, 2008 to Jan. 4, 2009 in Chicago, IL with 6 students.
- The Reverend Frank Honeycutt from Ebenezer Lutheran Church in Columbia, SC was the Visiting Theologian this year from April 6 to 7. He reminded us of Scripture's many surprises, demonstrating how the gospel's edge is sometimes lost when we become too familiar with traditional and domesticated interpretations of Biblical encounters. Our next Visiting Theologian will be Dr. Kenneth Bailey on March 29 – 30, 2009. He is a respected Biblical languages scholar whose specialty is seeing and hearing the teaching of Jesus through first century Jewish eyes.

- The Virginia Tech chapter of LSM, based at Luther Memorial, continued to provide student leadership within the Blue Ridge Region of LSM.
- Lutheran Campus Ministry at Virginia Tech continues to be an example of a valued partnership with St. Michael's congregation. St. Michael contributed \$4,850 in 2008.
- The Ministry Generated Resources for 2008 closed the year with gifts totaling \$22,480. The Ministry Generated Resources (MGR) goal for 2008 was \$22,500, an increase of \$4,000 over the previous year. Receipts for 2008 included \$8,948 for game day parking, gifts of \$10,952 from parents/alumni/friends, and \$2,580 from the Thrivent Match program. This year's MGR goal will be \$25,000.
- Lutheran Campus Ministry at Virginia Tech has received the following annual financial allocations for fiscal year 2009, which begins Feb. 1, 2009:
  - 2009 ELCA Churchwide Operating Grant: \$5,600
  - 2009 Virginia Synodical Operating Grant: \$43,362

The remainder of the LCM operating funds are provided in both Luther Memorial's and St. Michael's budgets which also incorporates the above funding levels from the ELCA and Synod. Ministry Generated Resources also contribute to the LCM budget.

- The Lutheran Student Movement (LSM) has updated its web site along with Luther Memorial. This was a major renovation that has received very positive feedback. Check us out at <http://lsmvt.lmlc.org/>.
- LSM now takes reservations for football parking in advance. We are reserving up to 40 spaces in the Prices Fork Lot for \$54, a savings of \$1 per game plus a guaranteed parking spot. Contact information for parking reservations can be found on the LSM web site discussed above.

Respectfully submitted,  
Mark Pierson, Chair

## CARING AND SHARING COMMITTEE

*“.....I was a stranger and you welcomed me.”*

- Matthew 25:35

**PURPOSE:** This team is responsible for the establishment and execution of programs in support of the elderly and handicapped, community service projects, and witnessing to prospective, inactive, and new members, and in general providing an environment of love and caring within and outside the congregation.

**MEMBERS:** Sandy Birch, Frances Gallimore, Betty Gross, Burn Gross, Jennie Hodge, Carol Howell, Andrea Robinson, Anna Rossomando, Carol Crawford (Chair)

A highlight of 2008 was the picnic celebration of St. Michael's 40th Anniversary. After the 11:00 a.m. service, Pastor John gathered together members and guests who shared a delicious potluck lunch on our church picnic grounds. Special guests that day were Rev. Glenn London and his wife, Anne. Pastor London lead our congregation from 1976-1985.

- **Shrove Tuesday Pancake Supper** – this traditional activity of the church brought people together for food and fellowship. Members of New Mt. Zion and Shiloh joined in this fellowship. Donations received were distributed to MCEAP (Montgomery County Emergency Assistance Program) and World Hunger.
- **Community Thanksgiving Dinner** – approximately 130 persons joined together to celebrate with a Thanksgiving meal which provided food and fellowship for individuals who are unable to provide a dinner for their families or who may be alone during the holiday. Volunteers from the NRV area assisted St. Michael's members in serving this meal. Volunteer Coordinator – Frances Gallimore
- **Price's Fork Fair Outreach Booth** – games, face painting, and balloon animals for children while reaching out and making our presence known to the community. Handouts included wristbands with religious quotes, bags of candy, Bible activity booklets, and Bibles for families.
- **Phone Cards for Service Personnel** – donations received at Christmas in July provided phone cards for service personnel. Volunteer Coordinator – Jennie Hodge

- **Salvation Army Angel Tree** -- gift packages of clothing, shoes and toys for children. Volunteer Coordinators – Suzanne Gay and Jennie Kelly
- **SHARE Program** –approximately 30 families participated in this food distribution program during 2008. Volunteer Coordinator – Betty Gross
- **Boy Scout Troop** –Jan Helge Bohn continued to serve as an energetic and enthusiastic Scout Master of Boy Scout Troop 158. Membership increased and the Scouts developed survival skills, leadership abilities, and friendships. The Troop meets each Thursday evening at the Church. The Blue Ridge Mountains Council, BSA recognized our Troop as a Quality Unit in 2008.
- **Cookbook** – continuing sales of “Feeding the Flock” cookbook provides support to the Justice and Mercy Fund at St. Michael.
- **Meals for Funerals/Illness** – Judy Clemens continued to coordinate this very important program of our congregation.
- **Lenten Soup and Sandwich Suppers** – supper provided prior to church service during Lent. Coordinated by Worship Committee and Caring and Sharing Team. Volunteer Coordinators–Fran Gallimore and Betty Gross
- **Happy Go Lucky** – activities involved monthly meetings with fellowship, food and programs, i.e.,day trips with Montgomery County Recreation, silent auction with proceeds sent to the Montgomery County Christmas Store. Coordinator – Sandy Birch
- **Softball Team** – members enjoyed a successful season and fine fellowship. Volunteer Coordinators –Jeff Birch and Doug Smiley
- **Volleyball Team** – St. Michael’s Volleyball team had a wonderful season and showed great improvement throughout the year.

OTHER PROJECTS INCLUDE:

MCEAP (Montgomery County Emergency Assistance Program), Justice and Mercy, Foster Children, and Welcome letters to new members

The Caring and Sharing Team offers special thanks to St. Michael’s members and friends who supported the 2008 projects with their time, talents and contributions.

\*\*\*\*\*

## EDUCATION TEAM

St. Michael offers a variety of educational opportunities to help individuals and families grow in their life of faith. From September until May, Sunday School meets each Sunday morning offering classes for all ages. A combined Confirmation class for youth in 6th, 7th and 8th Grade also meets on Sunday mornings. We continued to be blessed with leaders, teachers, and assistants who love to work with our students and students who have a desire to hear, study, and share God's Word. Their willingness to share their gifts is what makes our Christian Education program special. St. Michael would especially like to thank Loren Crowder and Donita Moore for sharing their musical gifts with us during the Sunday School Opening. They contribute so much to our Christian Education programs.

This year, St. Michael's Youth Night, for youth from kindergarten through 12th Grade, moved to a new night and time. The group gathers for fun and learning on the second and fourth Sunday of the month from 5:00 to 6:00 PM. Pastor John leads the kindergarten through 5th grade group and Carrie Mayer leads the Middle School and High School group. Our group consists of between 12-18 kids. Special thanks to all the families who help support this wonderful ministry.

During the 11 AM Service, St. Michael offers Christ's Kids for youth from kindergarten through 5th grade. The group leaves worship following the Children's Sermon to share a short Bible Story and does a related craft before returning to worship. Thank you to all the parents who serve as volunteer leaders.

Bible School was held in June with over 45 youths and adults participating. This year's theme was "Power Lab: Discovering Jesus' Miraculous Power." Classes were offered for preschool and kindergarten through Middle School as well as adults. Many thanks go out to all the teachers, music leaders, and ladies that provided the meals. It was a wonderful opportunity to learn more about Jesus.

Our Christmas program this year was two short plays. The kindergarten through 2nd Grade group performed "Animals in the Manger", while the older children performed, "The Christmas Story." Over 30 youth and adults worked together to share this fun and entertaining telling of the Christmas story.

Pastor John lead a Bible Study each Tuesday morning at 11 AM which focuses on the readings for worship. In addition to the Tuesday morning Bible Study, Pastor John also led a monthly Sunday evening Bible Study which focuses on a particular topic.

# PROPERTY TEAM

**PURPOSE:** The property committee's main function is to oversee the church property, making improvements and repairs as needed. There were a number of improvements and repairs made in 2008.

**MEMBERS:** Sam Akers, Bob Brown, Ray Howell, Wanda Pascoe, Randy Robinson, Fran Shepherd

Activities included:

- Sponsored the "spring clean-up" (outdoors) and storage shed clean-up
- General upkeep and mowed the grass
- Mulched playground area and church grounds
- Coordinated Church as Polling Precinct
- Removed snow from the parking lots
- Replaced some chairs
- Completed landscaping by front sign and Moss Memorial Garden and trimmed bushes
- Worked with the VT Big Event to clean worship area windows
- Coordinated weekly weeding schedule
- Repaired door catch
- Sprayed for insects monthly
- Repaired heat pump
- Painted front doors
- Repaired holes in front door
- Repaired Sunday School room door catches
- Cut low branches on trees
  
- Special thanks to all those folks who work behind the scenes who play a major part in the upkeep and maintenance of our church.
- Thanks to Ray Howell for his help in our maintenance issues.
- Thanks to all those who help mow and keep our grounds looking nice.

# STEWARDS TEAM

The Stewards Team is called to promote understanding of congregational stewardship and encourage the sharing of our time, talents and treasures.

Our theme for 2008 was “Cruising on the St. Michael Steward Ship”. A visual display of a cruise ship hung in the narthex throughout the year. Several skits with a cruise line theme were sponsored by the church “gems” and the 3-5th grade Sunday School class. Time and talent surveys were completed in March. Members had the opportunity to complete the survey on-line as well. Members of St. Michael volunteered to serve on committees and teams, teach in our Sunday School and Vacation Bible School, prepare food, maintain the church grounds, sing in our choirs, serve on Sunday morning as ushers, lay readers, acolytes, communion assistants, greeters and altar care providers. During the year, many donated their time and talents to special projects such as representing St. Michael at the Price’s Fork Fair, preparing Micah’s backpacks with weekend food for elementary school children, or remodeling bathrooms at the Montgomery County Christmas Store.

A regular feature in the monthly newsletter, Sharing Our Gifts: Time, Talents and Treasure, was devoted to recognizing “quiet servants” who volunteered their time and talents for numerous tasks and activities at the church and thanking the congregation for participating in the projects listed below.

Here are some examples of how the St. Michael congregation shares its gifts with the community and the world.

- \$7,300 raised by the “Keep the Memory Team” for the Montgomery County Relay for Life
- Food and paper goods for the Montgomery County Food Bank
- Food, cleaning supplies, paper goods, baby items, childrens books for the Women’s Resource Center
- School supplies for Prices Fork, Kipps, and Ellison-Lafayette Elementary Schools
- Christmas gifts for children sponsored by the Salvation Army Angel Tree project
- 48 Easter baskets for children at the Women’s Resource Center and the Salvation Army
- 220 Christmas shoebox gifts for Head Start children on the Pine Ridge Indian Reservation in South Dakota (a joint project with our Montgomery County Lutheran parishes); mailing prepared at “Party with a Purpose” in November
- 15 electric heaters sent to the Pine Ridge Indian Reservation
- An average of 10 flower arrangements for Good Samaritan Hospice created weekly from altar flowers
- \$2,400 for the Brown Fund
- \$4,620 for the Montgomery County Emergency Assistance Program (MCEAP)
- \$252 for MCEAP donated at the annual Souper Bowl Sunday and Pancake supper
- Support of two children in Indonesia and India through the Christian Children’s Fund

- Assistance to 79 families for rent and medical expenses, electric and water bills, heating oil, and food totaling \$7,344 through the Justice and Mercy Fund
- \$351 raised by the Happy-Go-Lucky luncheon group in support of the Montgomery County Christmas Store
- Gifts for moms and dads donated to the Montgomery County Christmas Store
- \$1,076 (including a \$400 gift from Thrivent) for phone cards for soldiers serving in Kuwait and Iraq. The mailing also included candy and other small gifts.
- \$473 Lenten offering for ELCA Disaster Relief fund (hurricanes in the Midwest)
- \$19, 525 donated to the Virginia Synod to support ministry in the Synod, the country and in the world. Newsletter articles entitled “God’s Work, Our Hands” highlight some of the projects funded by our gift.
- \$1,200 to Grace Lutheran Church in Spotsylvania, our Mission Partner
- Assistance to Kristy Buyok, our Lutheran Theological Southern Seminary partner, totaling \$379
- Donation of \$1,500 to the Blacksburg Interfaith Food Pantry
- \$4,850 to Lutheran Campus Ministries

The team assisted with the preparation and mailing of the 2009 Estimate of Giving cards and letters in October and enlisted the “4 church gems”, Opal, Garnet, Pearl and Ruby, to emphasize the Estimate of Giving program during an October worship service.

Stewardship of our earth (Care of Creation) was emphasized through monthly newsletter articles. St. Michael continues to take good care of our earth by such actions as recycling ink cartridges, using recycled copy paper, and providing recycling bins in the church for paper and cardboard.

The stewardship of our congregation is exceptional and we thank you all. A catered brunch was held in November to honor all the St. Michael stewards. You are generous supporters of the ministry at St. Michael, in the community and the world.

Sandy Birch (chair), Ben Simmers, Jody Smiley, Hank Schneider, Pastor John, and Jennie Hodge (for Care of Creation)

*We offer with joy and thanksgiving  
what He has first given us—our selves, our time, and our  
possessions, signs of His gracious love.*

\*\*\*\*\*

# WORSHIP COMMITTEE

**PURPOSE:** To plan and coordinate all activities relating to worship services. During 2008, Sunday worship services were held at 9:00 am and 11:00 am.

**MEMBERS:** Tacey Apisa, Carol Bland, Mack Brown, Lori Anne Kirk, Karen Mayer, Doug Smiley, Pastor Wertz

**Activities:** The Committee met several times during the year to evaluate, plan, and expand worship opportunities.

- **Altar Care:** Volunteers from the congregation prepared Holy Communion and changed altar vestments. Their duties included cleaning of communion ware after services.
- **Ushers, Communion Assistants and Lay Readers:** Volunteers from the congregation served in these positions. Alice Noonkester sent reminder notices each week.
- **Music:** Donita Moore served as the organist and choir director for the 11am services. Brandy Buckles served as pianist for the 9am services. A variety of settings were used from Evangelical Lutheran Worship, corresponding to times in the church year.
- **Flowers:** Charlene Harris coordinated ordering altar flower arrangements, donated by members of the congregation. The Worship Committee ordered lilies and poinsettias for Easter and Christmas Eve services respectively.
- **Nursery:** A paid nursery worker, Lauren Harber, staffed the nursery each Sunday morning.
- **Recordings:** Sermons were taped and posted on the St. Michael website. Bryan Katz oversees this ministry.
- **Acolytes:** Kris Wertz provided training for our acolytes. Youth may begin serving as acolytes when they reach the third grade.
- **Special Services:** In August, there was a Blessing of the Backpacks service to send teachers and students back to school. A Blessing of the Animals was held in October. On All Saints Sunday, there was a Service of Prayer for Healing. Holden Evening Prayer was held on the second Thursday of each month.

### Seasonal Activities:

- **Lent:** Services of Holden Evening Prayer were held each Wednesday evening during Lent with one pastoral exchange with Trinity Lutheran Church in Pulaski. Ash Wednesday, Maundy Thursday and Good Friday services offered additional opportunities for Lenten worship. “Hands-On Holy Week,” a service for youth, was held on the Saturday before Easter.
- **Easter:** Services were held at 7am and 11am .
- **Thanksgiving:** A joint worship service with St. Mary’s Catholic Church was held on the Sunday evening before Thanksgiving at St. Mary’s.
- **Advent:** Luther Memorial and St. Michael alternated mid-week services during Advent using Holden Evening Prayer. Fran Shepherd organized Christmas caroling to home-bound members.
- **Christmas:** Worship services were held at 7pm and 11pm on Christmas Eve. A service of Lessons and Carols was held on the Sunday after Christmas.



Christmas Eve children’s sermon with Pastor John.

# MEMORIAL COMMITTEE

FOR 2008

The Memorial Committee meets on an as needed basis to act on Council recommendations or conduct other business related to overseeing the use of all money donated to St. Michael as memorials.

This past year, designated funds were used for Facilities Expansion in memory of Florence Allen, Tim Clemens, Betty Eggert and Julia Landes, for Justice and Mercy in memory of Hope Mobbs, for the St. Michael Library in memory of Lucy Bishop and for worship and music in memory of Margaret Katz. Undesignated memorials were given in memory of Florence Allen, Lucy Bishop, Tim Clemens, Thelma Hylton and Julia Landes.

The committee maintains a list of suggested Memorials to be used by families, and is always available to answer questions or assist in choosing a memorial gift. Members of the committee are: Bob Brown, Cindy Dowdy-Treasurer, Jim Clemens-Chair, Jay Nagle, Donna Oliver, Peggy Price, Anne Surface and Sandy Birch.

The Memorial Fund Treasurer's report gives a complete breakdown on designated and undesignated money, received and disbursed from the fund.

*Jim Clemens*  
Chair

## MEMORIAL FUND – 2008

Beginning Balance	\$ 762.84
Expenses	\$ 0.00
Income:	
In memory of Julia Landes	\$ 50.00
In memory of Thelma Hylton	\$ 420.00
In memory of Lucy Bishop	\$ 150.00 (\$25 designated for library)
In memory of Tim Clemens	\$ 120.00
In memory of Florence Allen	\$ 25.00
In memory of Margaret Katz	\$ 100.00 (Designated for worship and music)
Interest	\$ 2.97
Ending Balance	\$ 1630.81

### Memorial contributions that were designated for other funds:

In memory of Betty Eggert	\$1150.00 (Facilities Expansion)
In memory of Julia Landes	\$70.00 (Facilities Expansion)
In memory of Florence Allen	\$50.00 (Facilities Expansion)
In memory of Hope Mobbs	\$25.00 (Justice and Mercy)
In memory of Tim Clemens	\$500.00 (Facilities Expansion)

# WOMEN OF THE E.L.C.A.

The Women of the ELCA is a group of women who support the mission of St. Michael. It promotes stewardship and fellowship among the women of the church as they work within the congregation and reach out with projects in the community and in the world. Monthly meetings, held in members' homes or at the church, generally include a brief program, work on ongoing projects and fellowship time.

President: Alice Schneider  
Secretary: Dianne Krallman

Vice President: Jody Smiley  
Treasurer: Sandy Birch

Projects and activities for 2008 included the following:

- Coordinated donations to the Montgomery County Food Bank (delivered each month by Pat Smith).
- Coordinated monthly donations, e.g., cleaning supplies and baby items, to the Women's Resource Center.
- Donated 2 SHARE boxes monthly to the Women's Resource Center
- Assembled 48 Easter baskets containing candy and small gifts donated by the congregation. The baskets were delivered to the Salvation Army and the Women's Resource Center.
- Hosted the Easter Breakfast in March, the Sisters in Christ Luncheon and Graduates Reception in May and lunch for the L'Cubed Lutheran Students at Virginia Tech.
- Four members attended the Virginia Synodical Women's Organization (VSWO) annual convention in Richmond in July. Jody Smiley serves as VSWO President.
- Four baby project visits were made to members of the congregation with newborns. An altar rose and a small book are given to each family.
- On July 23, St. Michael hosted Rose Kidabing from Papua New Guinea. Women from several New River Valley conference churches attended the dinner as Rose shared information about herself and family and church sponsored projects in her country. Karen Mayer served as her host at a national Global Mission meeting and the VSWO convention in Richmond.
- Sponsored the annual "Ladies Night Out" in August at the Kabuki restaurant.

- Coordinated the donation of school supplies and backpacks by the congregation; sorted and delivered the supplies to Elliston Lafayette, Kipps and Price's Fork Elementary Schools. Thrivent provided \$100 gift cards for each school.
- Hosted the annual New River Conference Fall Gathering in October. Pastor John Wertz gave a program on "Roots and Wings", nurturing faith in families. Included in the event was a visit to the St. Michael Soda Shoppe, serving ice cream sundaes and sweet treats.
- Hosted the annual St. Michael Birthday Dinner on October 26 -- an Italian Festa, featuring Anna Rossomando's homemade lasagna. A free will offering was sent to the Montgomery County Christmas Store.
- Books brought to the December meeting were donated to the children at the Women's Resource Center.
- Sponsored the collection of Christmas gift shoe boxes for the Head Start children at Pine Ridge Indian Reservation in South Dakota. Christmas boxes were also donated by members of the New River conference churches at the Fall Gathering, a Girl Scout troop and the local DAR chapter. At the Party with a Purpose on November 23, adult and youth members of St. Michael, along with the youth of other New River conference churches, enjoyed a pizza supper and prepared 220 gift boxes for mailing to the reservation. Funds for 15 electric heaters were also sent. Additional boxes of gifts, including a large assortment of items knit by Sharon Oliver, were sent to Rev. Karen Rupp who runs the homeless program at the Pine Ridge Reservation.



Christmas gift shoe boxes for the Head Start children at Pine Ridge Indian Reservation.

## MEN IN MISSION

The Men in Mission group concentrated on three projects in 2008. On Easter Sunday, March 23, the group served dinner at the Roanoke Rescue Mission. During October, the Men in Mission donated over a hundred hours of labor in remodeling the children's bathrooms in Kid's World at the Montgomery County Christmas Store. In addition, the men also removed mold and painted the children's nursery at the store. On December 13, the men directed traffic in the parking lot of the Christmas Store and helped shoppers with their carts. The group is "on-call" to support the programs of St. Michael and provide community service as needed.

Jeff Birch, Coordinator



The Construction Crew at the Montgomery County Christmas Store

## 2008 INVESTMENTS IN MINISTRY

	Actual 2007	Projected 2008	Actual 2008
Giving in Support of 2008 Spending Plan for Ministry	\$ 169,984	\$ 174,000	\$ 167,154
Sharing Our Gifts: Includes gifts to Virginia Synod, Campus Ministry at Virginia Tech,	\$ 28,954	\$ 27,248	\$ 27,455
Worship Includes Supplies for Worship and Music Programs and Salaries	\$ 20,064	\$ 20,562	\$ 20,453
Youth and Education Ministry Youth and Family Programs, Sunday School, Vacation Bible School and Child Care Staffing	\$ 8,818	\$ 9,250	\$ 8,740
Caring and Sharing Includes Fellowship Events, Softball and Volleyball Teams, Publicity, Future Programs and Associate in Ministry	\$ 2,099	\$ 6,865	\$ 7,123
Pastoral Support Includes Salary, Benefits, and Continuing Education	\$ 74,915	\$ 80,657	\$ 80,420
Parish Administration and Support	\$ 17,032	\$ 20,028	\$ 18,524
Property	\$ 10,359	\$ 9,772	\$ 8,795
<b>Total Spending Plan for Ministry Investment</b>	<b>\$ 162,241</b>	<b>\$ 174,782</b>	<b>\$ 171,510</b>

Notes:

1. *Total Giving to All Funds in 2008 (including General Fund, Facilities Expansion Fund, Justice and Mercy Fund, and other Restricted Funds) was \$264,267 which was an increase of approximately \$66,000 from the total giving to all funds in 2007.*
2. *St. Michael's Unrestricted General Fund balance at the end of 2008 is \$39,150.*
3. *In the General Fund, expenses exceeded giving by \$4356.*
4. *The Balance in the Facilities Expansion Fund at the end of 2008 is \$20,883. Additional information in Facilities Expansion Fund Report.*
5. *The Balance in the Justice and Mercy Fund at the end of 2008 is \$827.*
6. *The Balance in the Property Maintenance Fund at the end of 2008 is \$4,270.*

updated 1/30/09 9:15 AM

## 2009 SPENDING PLAN FOR THE MINISTRY

	2009	2008
<b>Sharing Our Gifts</b>		
VA Synod & ELCA	18,800	18,484
Mission Congregation Partnership	1,200	1,200
Mont. County Emergency Assistance Program	3,120	3,120
Christian Children's Fund	720	544
Community Ministry Support	600	300
Roof for Soi Lutheran Church PNG	500	0
Campus Ministry at VA Tech	<u>3,600</u>	<u>3,600</u>
Total	<b>28,540</b>	27,248
<b>Worship</b>		
Music and Choir Supplies	550	600
Inserts and Bulletins	750	850
Altar Supplies	350	250
11 AM Organist	7,989	7,757
11 AM Service Choir and Chimes Director	6,973	6,770
11 AM Musician Retirement Assistance	448	435
11 AM Musician Continuing Education	250	250
9 AM Pianist	2,702	2,600
Supply Pastor	300	400
Organist Substitutes	350	350
Miscellaneous	<u>100</u>	<u>100</u>
Total	<b>20,812</b>	20,362
<b>Youth and Education Ministry</b>		
Youth		
Youth Activities	1,200	1,600
Family Programs	750	750
Nursery Worker	2,000	2,000
Education		
Christian Education	1,300	1,900
Confirmation	3,000	1,000
Conferences	600	150
Subscriptions/Devotionals	1,100	1,200
Scholarship Subsidy	0	600
Miscellaneous	<u>50</u>	<u>50</u>
Total	<b>10,000</b>	9,250
<b>Faith Milestone Ministry</b>		
New Baby Ministry	75	100
Faithchest Resources	125	150
Faith Builders Toolbox Resources	150	200
Grief Resources	<u>50</u>	<u>50</u>
Total	<b>400</b>	500
<b>Caring and Sharing</b>		
Associate in Ministry	4418	4,290
Fellowship	500	500
Evangelism/Publicity	700	800
Sports Teams	325	325
Older Kids Ministry	150	100
Future Programs	500	500
Appreciation	300	300
Miscellaneous	<u>50</u>	<u>50</u>
Total	<b>6,943</b>	6,865

**Pastoral Support**

Salary	31,066	29,944
Housing	20,106	19,380
Pension, Insurance	25,541	24,325
Social Security	5,870	5,658
Continuing Education, books	<u>1,350</u>	<u>1,350</u>
Total	<b>83,933</b>	80,657

**Support/Stewardship**

Materials	50	50
Workshop	100	100
Miscellaneous	<u>50</u>	<u>50</u>
Total	200	200

**Parish Administration**

Administrative Assistant	7,387	7,172
Social Security	2,600	2,331
Office Supplies	1,500	1,250
Postage	650	650
Copier Maintenance	1,650	3,400
Telephone	900	900
Internet Service	1,000	275
Mileage Reimbursement	3,000	3,000
Conventions and Conferences	550	550
Miscellaneous	<u>500</u>	<u>300</u>
Total	<b>19,737</b>	19,828

**Property**

Improvements	750	1,500
General Maintenance & Repairs	500	1,000
Insurance - Church	3,000	1,900
Custodian Services	2,497	2,497
Custodian Retirement Assistance	0	75
Utilities	2,600	1,900
Snow Removal	500	500
Pest Control	500	375
Miscellaneous	<u>100</u>	<u>100</u>
Total	<b>10,447</b>	9,772

Total Spending Plan for Ministry	<b>181,012</b>	174,782
Total Projected Current Fund Giving 2008		<b>170,000</b>
Total Estimated Current Fund Giving 2009	<b>178,500</b>	

**Projects to be paid from Property Maintenance Fund**

Landscaping & Maintenance	\$ 1,500
New Computer	\$ 1,500
Equipment Maintenance	\$ 500
Heat Pump Maintenance	<u>\$ 2,000</u>
	\$ 5,500
Total Estimated Giving to Property Maintenance Fund	\$ 7,000

**Classroom Addition- Facilities Expansion Fund**

Mortgage on Classroom Addition	\$55,284
Total Estimated Giving for Classroom Addition	\$70,000

# NOTES ON THE 2009 SPENDING PLAN

Thank you for your investment in the ministry of God at St. Michael. With your generous stewardship of God's gifts to you, St. Michael's ministry continues to grow. Overall giving to the ministries of St. Michael including gifts to the Current Fund, Designated Funds, Justice and Mercy Fund, Facilities Expansion Fund and Property Maintenance Fund will increase by approximately 20% in 2009.

Based on your estimates of giving for 2009 and established giving patterns from the last several years, the Council has prepared a proposed spending plan that is extremely close to the level of increased giving expected in 2009. Historically, contributions to St. Michael's current fund increase by approximately 5% per year. The 2009 Spending Plan for Ministry represents a 3.6% increase from the 2008 Spending Plan for Ministry and a 6.5% increase from projected current fund giving in 2008. Below are notes on specific changes in the proposed plan. If you have further questions about the spending plan, please speak with Pastor John or one of the members of the Congregational Council.

## **Sharing our Gifts**

- God has generously blessed the ministry of St. Michael. 16% of the Proposed Spending Plan will be given to support ministries outside the congregation.
- In addition to increasing our giving to the Virginia Synod, the Spending Plan makes a gift of \$500 which will pay for a new roof for Soi Lutheran Church in Papua, New Guinea and \$600 to various support community ministries which can apply for help from the church.

## **Worship**

- Worship is central to our lives of faith. Through scripture, readings, music, preaching and the sacraments, we are fed and nourished for our lives of faith. The salary increase for our musicians is 3%.
- Changes in music supplies, bulletins and altar supplies reflect changes in our spending patterns from 2008.
- The Supply Pastor line is reduced to reflect our plan to use leadership from within the congregation for some of the Sundays that Pastor John is on vacation.

## **Youth Ministry, Family Ministry and Education**

- St. Michael strives to be a place where the people of God are nurtured for their lives of faith through education and fellowship.
- Our Youth Ministry, Family Ministry and Christian Education Ministry are growing. We are able to reduce costs in these areas because we have shifted to less expensive and more effective resources.

- We could have as many as 7 Confirmation students attending camp this summer, so the Confirmation line increases by \$2000 to help with registration fees. This is a one-time increase that will be reduced in 2010.
- The Scholarship Subsidy is removed because the Scholarship Fund now generates enough interest to award the \$600 Scholarship without a subsidy.

### **Faith Milestone Ministry**

- Nurturing individuals as they grow in faith is vital.
- The Faith Milestone Ministry will support new and existing ministries that will help families and individuals grow in their relationship with God. Spending in these areas is reduced to reflect actual costs.

### **Care for God's People and Sharing God's Love**

- Part of our mission is caring for God's people in need and to tell the story of God's love for all. We have increased spending for Older Kids Ministry and reduced spending on publicity based on our 2008 spending patterns.
- Salaries for our ministry staff show an increase for 2009.
- The Older Kids Ministry line increased to reflect our growing senior adult ministry.

### **Supporting God's Ministry at St. Michael**

- We provide further support for our ministry through parish administration and property. From paying for insurance, to buying paper for the copier to snow removal in the winter, we provide the elements necessary for our office and facilities to support the ministry of the congregation.
- Suzanne Gay, our Administrative Assistant, has been a wonderful addition to our staff. She will receive a 3% pay raise. Our new custodian is Joanne Pascoe.
- Utility costs increased because of the new building. The improvements line is reduced because most of our improvements in 2009 will be related to the new building. General Maintenance and Repairs is reduced to reflect actual costs.
- Maintenance and Property Projects for 2008 are listed as special projects. These projects include work by a professional landscaper, equipment maintenance and the purchase of a new computer for Pastor John.
- The mortgage on the Classroom Building will be paid from donations to the Facilities Expansion Fund. Estimated giving to the Facilities Expansion Fund exceeds the expected mortgage payments.

\*\*\*\*\*

# ST. MICHAEL LUTHERAN CHURCH

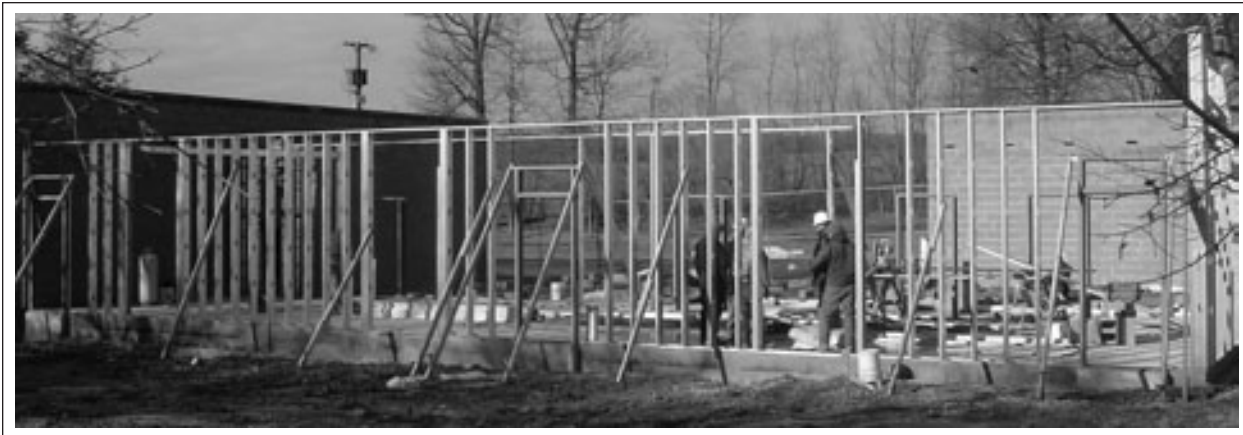
## Growing With Faith - Classroom Addition Facilities Expansion Fund Report

To provide a clear picture of giving and expenditures in the Facilities Expansion Fund, this report includes all giving and expenditures related to the project over the last two years from January 1, 2007 until December 31, 2008.

Total Giving to Facilities Expansion Fund	+\$87,630.75
Transfer from Parsonage Fund <sup>1</sup>	+\$15,000.00
Design and Construction Bills <sup>2</sup>	-\$71,502.33
Mortgage Payments <sup>3</sup>	-\$10,245.00
Fund Balance Dec. 31, 2008	+\$20,883.17

### Notes:

1. The Congregation approved borrowing the balance of the Parsonage Fund for construction. After the \$15,000 transfer, the remaining balance in the Parsonage Fund on December 31, 2008 was \$54,579.85.
2. Design and Construction Bills include all payments to the Architect, the Town of Blacksburg for permits, fees paid to Montgomery County associated with the new septic system and transfer to County Water and other various expenses.
3. Our loan from Thrivent required us to begin mortgage payments once the loan was funded. All payment requests from Lionberger are paid through our loan from Thrivent. Through the end of December, we have paid Lionberger \$154,826. Our Guaranteed Maximum Contract with Lionberger is for \$662,750.
4. Our Mortgage balance with Thrivent on December 31, 2008 was \$597,654.30



# ST. MICHAEL LUTHERAN CHURCH

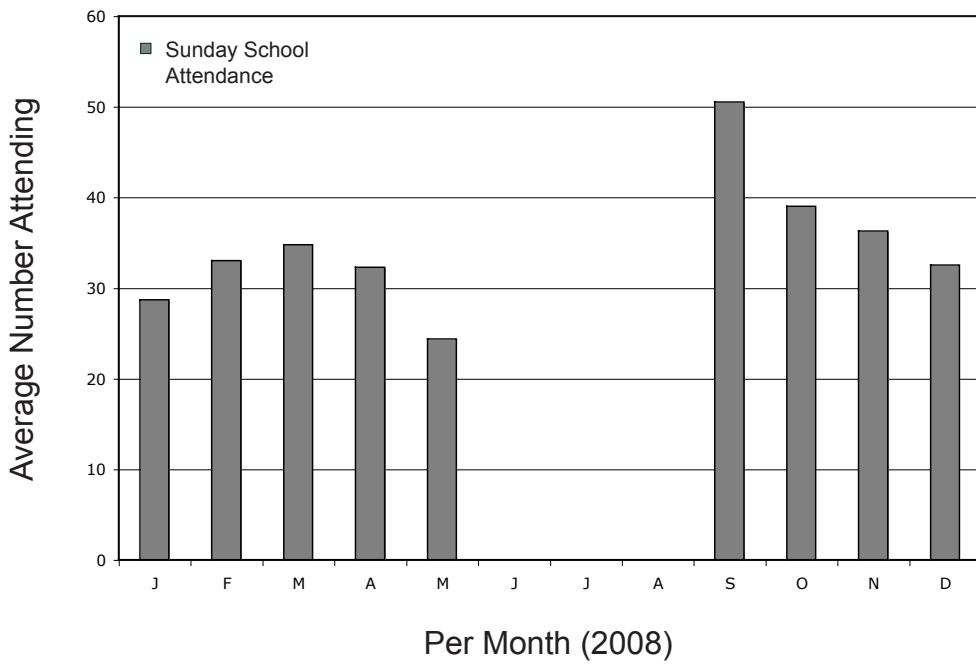
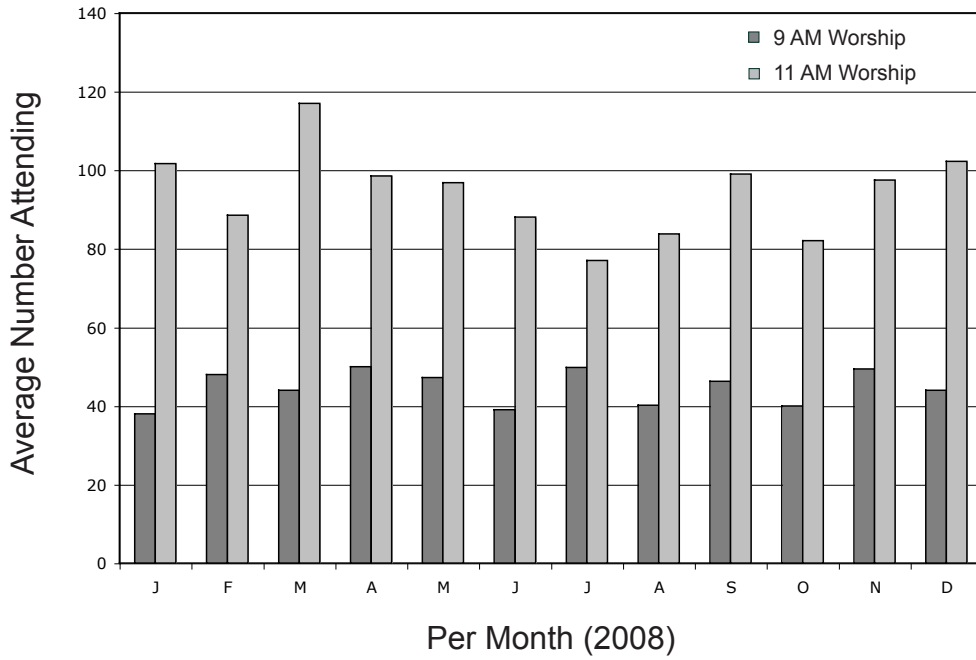
## Growing with Faith: "Phase 1 - Classroom Addition"

On August 17, 2008, the Congregation approved the construction of the classroom addition designed by Tom Koontz, hired Lionberger Construction as the general contractor and approved borrowing up to \$600,000 from Thrivent Financial for Lutherans to fund construction. Final approvals from the town of Blacksburg were received in late September. A groundbreaking ceremony was held on September 7 and construction began in October. While construction at times has been slowed by severe weather, the walls are going up and hopefully the building will be completed by late May 2009. Pictures of the construction progress are posted regularly on our website: <http://www.st-michael-lutheran-church.org/facilities-expansion/>. Thank you to everyone who has given of their time and resources to make this addition a reality.



# TRENDS IN WORSHIP ATTENDANCE

## Sunday Morning Services



# TRENDS IN WORSHIP ATTENDANCE

## Sunday Morning Services

